



Aardee established 1941
building security

Product Specification - Commercial/Retail Installations



Curtain

Curtain formed in 75mm concave galvanised steel lath, complete with nylon endlocks. Galvanised steel "L" or "T" section bottom rail specially formed to interlock with curtain.

Options

Plastisol or Powder-coated finish. Perforated or Punched-out for viewing.

Guides

50mm x 50mm x 32mm or 65mm x 65mm x 32mm galvanised steel channels welded to galvanised steel support angles Complete with Hex Headplate (size subject to shutter height). All PPC to match curtain or unpainted if required.

Operation

Shutter operated by a Guthrie Douglas 240v electric tube motor, encased in 100mm mild steel tube. Supplied with a PDT Technology fitters mate and a 24v Orion Key Switch



Options

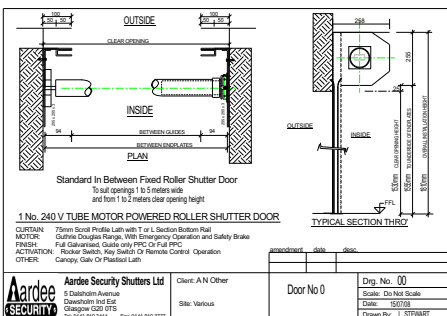
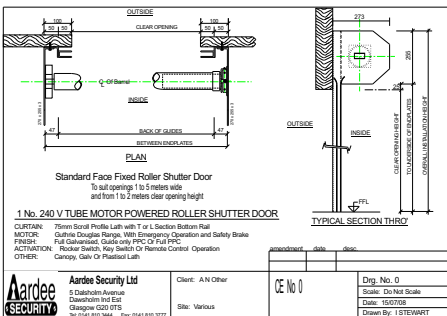
PDT Rocker Switch, PDT Rollertec remote control, wireless safety edge or photo-cell.

Shutter Enclosure

Hex box or Fascia plate can be supplied if required (at additional cost)
PPC Galvanised steel or plastisol finish available.

Safety

Safety breaks are installed over doorway on all shutters to comply with DHF regulations. Low voltage {24V} wiring to all user switches and control for operator safety.



Aardee Security Limited

5 Dalsholm Ave, Dawsholm Industrial Estate, Glasgow, G20 0TS

Telephone: 0141 810 3444 Fax: 0141 810 3777

Email: sales@aardee.co.uk